

May 2019 core infra stands at 5.1%

The core infrastructure grows at 5.1% in May 2019 as against 6.3% in April 2019. The combined Index of Eight Core Industries stood at 138.7 in May, 2019, which was 5.1% higher as compared to the index of May, 2018. Its cumulative growth during April to May, 2019-20 was 5.7%.

Table 1: Sector wise trend in monthly production (% growth)

Sector	Weight	Apr 19	May 19
Crude Oil	8.98	(-)6.7	(-)6.9
Natural Gas	6.88	(-)0.8	0.0
Petroleum Refinery Products	28.04	4.3	(-)1.5
Coal	10.33	3.2	1.8
Fertilizer	2.63	(-)4.4	(-)1.0
Electricity	19.85	5.9	7.2
Cement	5.37	2.3	2.8
Steel	17.92	19.0	19.9
Overall	100	6.3	5.1

Source: PHD Research Bureau, compiled from the office of the economic advisor to the Govt. of India

In cumulative terms, core infrastructure industries registered a growth of 5.7% during April-May 2019-20 as against the same 4.4% during April-May 2018-19.

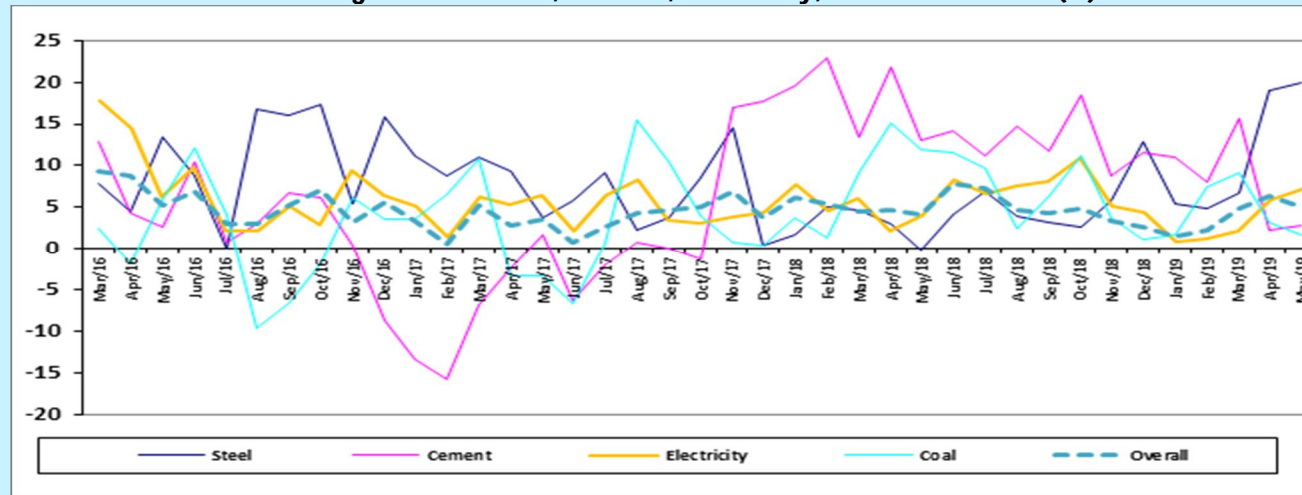
Table 2: Sector wise trend in production (% growth)

Sector	Weight	Apr-May 2019-20	Apr-May 2018-19
Crude Oil	8.98	(-)6.8	(-)1.9
Natural Gas	6.88	(-)0.4	2.0
Petroleum Refinery Products	28.04	1.3	3.9
Coal	10.33	2.5	13.6

Fertilizer	2.63	(-)-2.6	6.6
Electricity	19.85	6.6	3.1
Cement	5.37	2.5	17.3
Steel	17.92	19.4	1.4
Overall	100	5.7	4.4

Source: PHD Research Bureau, compiled from the office of the economic advisor to the Govt. of India

Trend in growth of steel, cement, electricity, coal and overall (%)



Source: PHD Research Bureau, compiled from the office of the economic advisor to the Govt. of India

Please contact for any query related to this mail to Ms. Kritika Bhasin, Research Officer at kritika.bhasin@phdcci.in with a cc to Dr. S P Sharma, Chief Economist at spharma@phdcci.in, PHD Chamber of Commerce & Industry.

Regards,

Dr S P Sharma

Chief Economist

PHD Chamber of Commerce and Industry

PHD House, 4/2 Siri Institutional Area

August Kranti Marg, New Delhi-110016, India

Tel: +91 49545454

Fax: +91 11 26855450



NATIONAL APEX CHAMBER

Email: spsharma@phdcci.in

Website: www.phdcci.in

Follow us on



"Towards an Inclusive & Prosperous India"



PHD CHAMBER OF COMMERCE AND INDUSTRY

PHD House, 4/2 Siri Institutional Area, August Kranti Marg, New Delhi - 110 016 (India) • Tel. : +91-11-2686 3801-04, 49545454, 49545400
Fax : +91-11-2685 5450 • E-mail : phdcci@phdcci.in • Website : www.phdcci.in, CIN: U74899DL1951GAP001947



COPYRIGHT: All rights reserved. No part of this publication/Release may be reproduced, distributed, or transmitted in any form or by any means, without the prior written permission of the publisher. For permission requests, write to the publisher.

DISCLAIMER: This message and its attachments contain confidential information. If you are not the intended recipient, you are strictly prohibited to disclose, copy, distribute or take any action in reliance on the contents of this information. E-mail transmission cannot be guaranteed to be secure or error-free, as information could be intercepted, corrupted, lost, destroyed, arrive late or incomplete, or contain viruses. The sender therefore does not accept liability for any errors or omissions in the contents of this message, which arise as a result of e-mail transmission. If verification is required please request a hard-copy version.