

GST Revenue collection of Rs. 1,02,503 crore for January 2019

The total gross GST revenue collected in the month of January, 2019 is Rs 1,02,503 crore of which CGST is Rs 17,763 crore, SGST is Rs 24,826 crore, IGST is Rs 51,225 crore (including Rs 24,065 crore collected on imports) and Cess is Rs 8,690 crore (including Rs 902 crore collected on imports).

GST Revenue Collections

Category	Amount
CGST	Rs. 17,763 crore
SGST	Rs. 24,826 crore
IGST	Rs. 51,225 crore
Cess	Rs. 8,690 crore
Total Gross GST Revenue	Rs. 1,02,503 crore

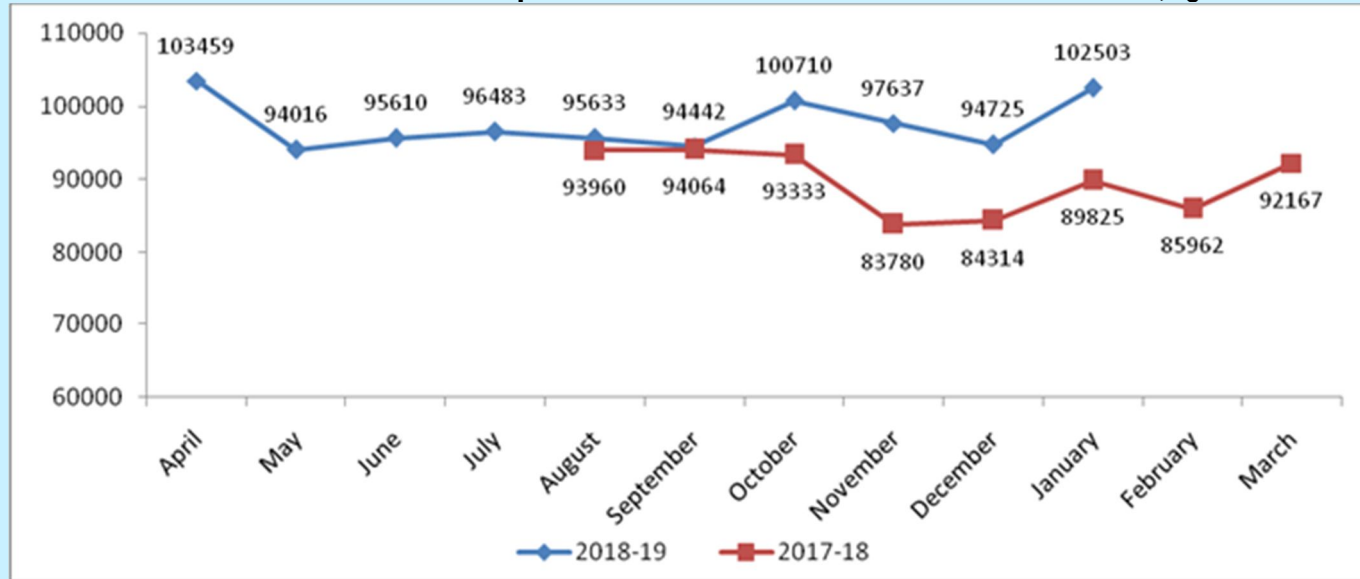
Source: PHD Research Bureau compiled from PIB

The government has settled Rs 18,344 crore to CGST and Rs 14,677 crore to SGST from IGST as regular settlement. The total revenue earned by Central Government and the State Governments after regular settlement in the month of December, 2018 is Rs 36,107 crore for CGST and Rs 39,503 crore for the SGST.

January 2019 collections are 14% above the January 2018 collections of Rs 89,825 crore. This jump has been achieved despite various tax reductions having come into force that provided major relief to the

consumers. The gross GST collections over the last three-month period has been 14% higher than the corresponding period last year.

Comparison of Gross GST Revenue (Figures in Crore)



Source: PHD Research Bureau compiled from PIB

Please contact for any query related to this mail to Ms. Kritika Bhasin, Research Officer at kritika.bhasin@phdcci.in with a cc to Dr. S P Sharma, Chief Economist at spsharma@phdcci.in, and Ms. Megha Kaul, Economist, megha@phdcci.in, PHD Chamber of Commerce & Industry.

Regards,
Dr S P Sharma
Chief Economist
PHD Chamber of Commerce and Industry



NATIONAL APEX CHAMBER

PHD House, 4/2 Siri Institutional Area
August Kranti Marg, New Delhi-110016, India

Tel: +91 49545454

Fax: +91 11 26855450

Email: spsharma@phdcci.in

Website: www.phdcci.in

Follow us on



"Towards an Inclusive & Prosperous India"



PHD CHAMBER OF COMMERCE AND INDUSTRY

PHD House, 4/2 Siri Institutional Area, August Kranti Marg, New Delhi - 110 016 (India) • Tel. : +91-11-2686 3801-04, 49545454, 49545400
Fax : +91-11-2685 5450 • E-mail : phdcci@phdcci.in • Website : www.phdcci.in, CIN: U74899DL1951GAP001947

Connect with us:



COPYRIGHT: All rights reserved. No part of this publication/Release may be reproduced, distributed, or transmitted in any form or by any means, without the prior written permission of the publisher. For permission requests, write to the publisher.

DISCLAIMER: This message and its attachments contain confidential information. If you are not the intended recipient, you are strictly prohibited to disclose, copy, distribute or take any action in reliance on the contents of this information. E-mail transmission cannot be guaranteed to be secure or error-free, as information could be intercepted, corrupted, lost, destroyed, arrive late or incomplete, or contain viruses. The sender therefore does not accept liability for any errors or omissions in the contents of this message, which arise as a result of e-mail transmission. If verification is required please request a hard-copy version.