

GST revenue collection for the month of February 2020 stands at Rs 1,05,366 crore

The gross GST revenue collected in the month of February, 2020 is Rs 1,05,366 crore of which CGST is Rs 20,569 crore, SGST is Rs 27,348 crore, IGST is Rs 48,503 crore (including Rs 20,745 crore collected on imports) and Cess is Rs 8,947 crore (including Rs 1,040 crore collected on imports). The total number of GSTR 3B Returns filed for the month of January up to 29th February, 2020 is 83.5 lakh.

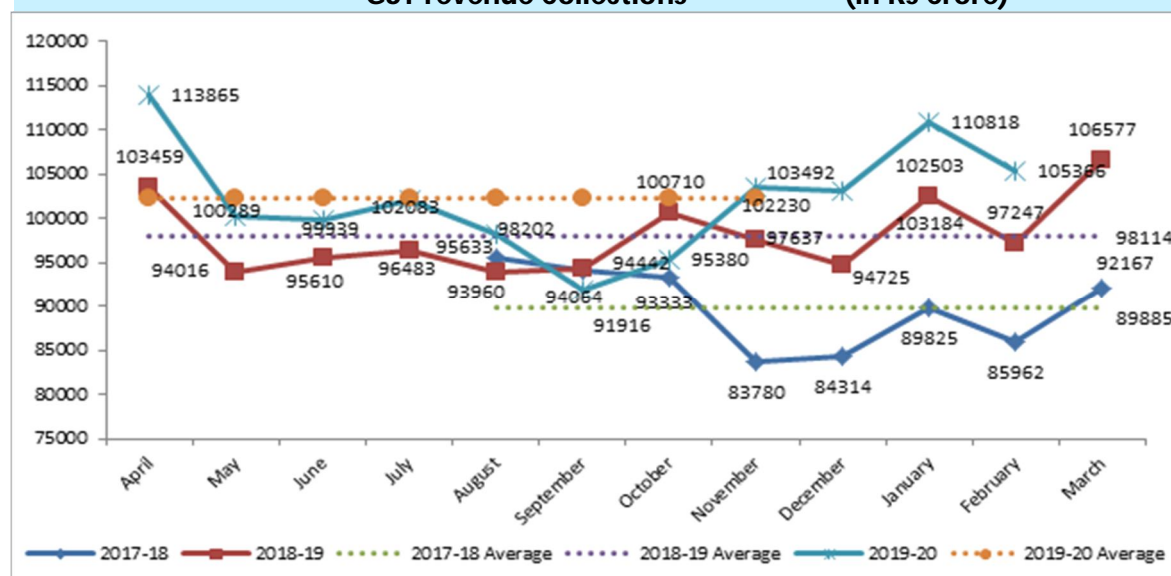
GST Revenue Collections

Category	Amount
CGST	Rs 20,569 crore
SGST	Rs 27,348 crore
IGST	Rs 48,503 crore
Cess	Rs 8,947 crore
Total Gross GST Revenue	Rs 1,05,366 crore

Source: PHD Research Bureau, PHDCCI, compiled from PIB

The government has settled Rs 22,586 crore to CGST and Rs 16,553 crore to SGST from IGST as regular settlement. The total revenue earned by Central Government and the State Governments after regular settlement in the month of February, 2020 is Rs 43,155 crore for CGST and Rs 43,901 crore for the SGST.

GST revenue Collections (in Rs Crore)



Source: PHD Research Bureau, PHDCCI, compiled from Ministry of Finance

The GST revenues during the month of February, 2020 from domestic transactions has shown a growth of 12% over the revenue during the month of February, 2019. Taking into account the GST collected from import of goods, the total revenue during February, 2020 has increased by 8% in comparison to the revenue during February, 2019. During this month, the GST on import of goods has shown a negative growth of (-) 2% as compared to February, 2019.

Please contact for any query related to this mail to Ms Kritika Bhasin, Research Officer at kritika.bhasin@phdcci.in with a cc to Dr S P Sharma, Chief Economist at spsharma@phdcci.in and Ms Surbhi Sharma, Associate Economist at surbhi@phdcci.in, PHD Chamber of Commerce & Industry.

Regards,

Dr S P Sharma

Chief Economist

PHD Chamber of Commerce and Industry

PHD House, 4/2 Siri Institutional Area

August Kranti Marg, New Delhi-110016, India

Tel: +91 49545454

Fax: +91 11 26855450

Email: spsharma@phdcci.in

Website: www.phdcci.in

Follow us on



NATIONAL APEX CHAMBER



"Towards Inclusive & Prosperous New India"



PHD House, 4/2 Siri Institutional Area, August Kranti Marg, New Delhi - 110 016 (India) • Tel. : +91-11-2686 3801-04, 49545454, 49545400
Fax : +91-11-2685 5450, 49545451 • E-mail : phdcci@phdcci.in • Website : www.phdcci.in, CIN: U74899DL1951GAP001947

Connect with us:



COPYRIGHT: All rights reserved. No part of this publication/Release may be reproduced, distributed, or transmitted in any form or by any means, without the prior written permission of the publisher. For permission requests, write to the publisher.

DISCLAIMER: This message and its attachments contain confidential information. If you are not the intended recipient, you are strictly prohibited to disclose, copy, distribute or take any action in reliance on the contents of this information. E-mail transmission cannot be guaranteed to be secure or error-free, as information could be intercepted, corrupted, lost, destroyed, arrive late or incomplete, or contain viruses. The sender therefore does not accept liability for any errors or omissions in the contents of this message, which arise as a result of e-mail transmission. If verification is required please request a hard-copy version.