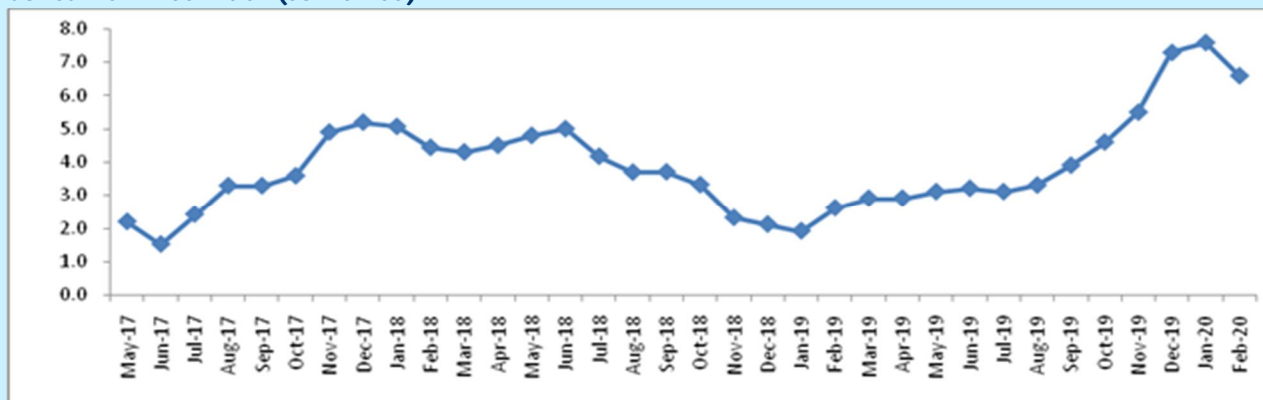


February 2020 CPI inflation falls to 6.58%

Rural India inflation falls to 6.67% in February 2020 as compared to 7.7% in January 2020 and Urban India inflation falls to 6.57% in February 2020 as compared to 7.4% in January 2020.

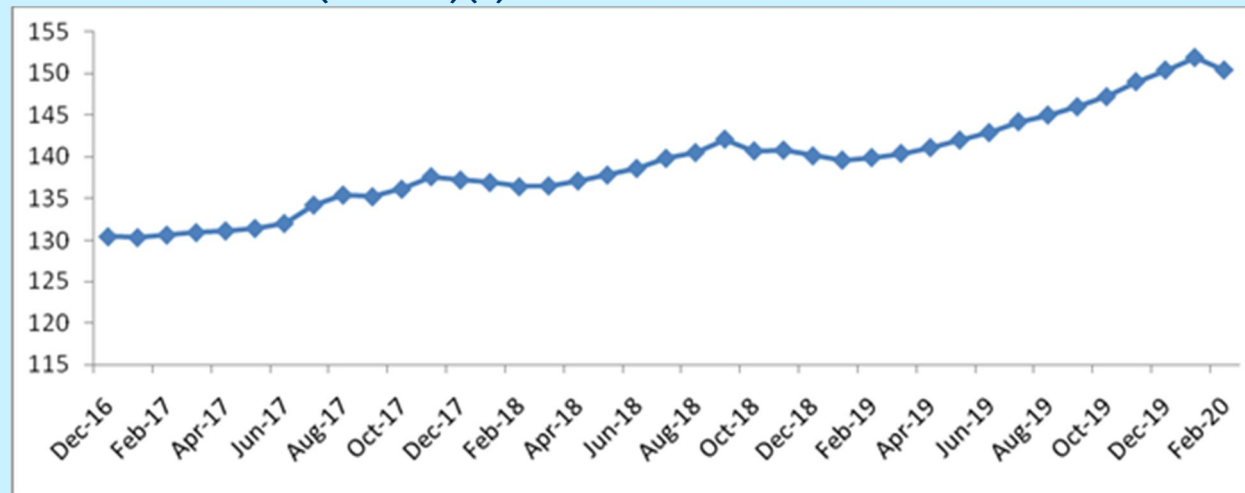
The all India general CPI inflation (Combined) for February 2020 falls to 6.58% from 7.59% in January 2020. The inflation rates for rural and urban areas for February 2020 (Provisional) are 6.67% and 6.57% respectively as compared to 7.7% and 7.4% respectively, for January 2020. Rate of inflation in February 2020 in vegetables stands at 31.6%, pulses and products at 16.6% and meat and fish at 10.2%.

Consumer Price Index (combined)



Source: PHD Research Bureau, compiled from MOSPI

Consumer Price Inflation (Combined) (%)



Source: PHD Research Bureau, compiled from CSO

All India annual inflation rates (%)

Category	Annual inflation rate (February 2020)		
	Rural	Urban	Combined
Food and Beverages	9.2	9.9	9.4
Pan, tobacco and intoxicants	4.1	4.3	4.1
Clothing and Footwear	1.6	2.7	2.1
Housing	-	4.2	4.2
Fuel and Light	4.7	9.3	6.4
Miscellaneous	4.4	4.5	4.5
General Index (All Groups)	6.7	6.6	6.6

Source: PHD Research Bureau, compiled from MOSPI Note: CPI (Rural) for Housing is not available

Consumer Price Index for the month of February 2020 for rural, urban and combined stood at 150.4, 147.7 and 149.1 respectively. In addition to this, Consumer Food Price Indices (CFPI) of February 2020 for rural, urban and combined stands at 149, 151.1 and 149.7 respectively.

Provisional annual inflation rate based on all India CFPI (Combined) for the month of February 2020 falls to 10.8% as compared to 13.6% in the previous month. The corresponding provisional inflation rates on all India CFPI for rural and urban areas for February 2020 are 10.3% and 11.5% respectively as against January 2020 are 13.02% and 14.7% respectively.

Please contact for any query related to this mail to Ms. Shivani Mehrotra, Research Associate at shivani.mehrotra@phdcci.in with a cc to Dr. S P Sharma, Chief Economist at spsharma@phdcci.in of PHD Chamber.

Warm Regards,

Dr S P Sharma

Chief Economist

PHD Chamber of Commerce and Industry

PHD House, 4/2 Siri Institutional Area

August Kranti Marg, New Delhi-110016, India

Tel: +91 49545454

Fax: +91 11 26855450

Email: spsharma@phdcci.in

Website: www.phdcci.in

Follow us on



"Towards Inclusive & Prosperous New India"



PHD House, 4/2 Siri Institutional Area, August Kranti Marg, New Delhi - 110 016 (India) • Tel. : +91-11-2686 3801-04, 49545454, 49545400
Fax : +91-11-2685 5450, 49545451 • E-mail : phdcci@phdcci.in • Website : www.phdcci.in, CIN: U74899DL1951GAP001947

Connect with us:



COPYRIGHT: All rights reserved. No part of this publication/Release may be reproduced, distributed, or transmitted in any form or by any means, without the prior written permission of the publisher. For permission requests, write to the publisher.

DISCLAIMER: This message and its attachments contain confidential information. If you are not the intended recipient, you are strictly prohibited to disclose, copy, distribute or take any action in reliance on the contents of this information. E-mail transmission cannot be guaranteed to be secure or error-free, as information could be intercepted, corrupted, lost, destroyed, arrive late or incomplete, or contain viruses. The sender therefore does not accept liability for any errors or omissions in the contents of this message, which arise as a result of e-mail transmission. If verification is required please request a hard-copy version.