

An online portal “ENSURE” has been launched to connect with Direct Benefit Transfer

Hon’ble Union Minister of Agriculture and Farmers’ Welfare Shri Radha Mohan Singh launched a portal ENSURE- National Livestock Mission-EDEG developed by NABARD and operated under the Department of Animal Husbandry, Dairying & Fisheries. Under the National Livestock Mission’s component called Entrepreneurship Development and Employment Generation (EDEG), subsidy payment for activities related to poultry, small ruminants, pigs etc. through Direct Benefit Transfer (DBT) goes directly to the beneficiary’s account. In order to make it better, simpler and transparent, the NABARD has developed an online portal “ENSURE” (<https://ensure.nabard.org>) so that the information related to beneficiary and processing of application can be made readily available.

Earlier, even after the loan approval, subsidy took a long time to reach the beneficiary’s account. However, under the new process, controlling officer/branch manager of the bank, after scrutinizing & sanctioning of proposal, uploads the subsidy claims in the portal. The subsidy will be approved within 30 days from the date of sanction of loan. Through this process, the flow of information/funds will also be quicker and more accountable. The burden of extra interest due to delay in the disbursement of the subsidy would now be reduced after the launch of the portal. Access from the portal will also be on real-time basis and list of beneficiaries can be easily prepared.

Please contact for any query related to this mail to Ms. Kritika Bhasin, Research Officer at kritika.bhasin@phdcci.in with a cc to Dr. S P Sharma, Chief Economist at spsharma@phdcci.in, and Ms. Megha Kaul, Economist, megha@phdcci.in, PHD Chamber of Commerce & Industry.

Regards,
Dr S P Sharma



NATIONAL APEX CHAMBER

Chief Economist
PHD Chamber of Commerce and Industry
PHD House, 4/2 Siri Institutional Area
August Kranti Marg, New Delhi-110016, India
Tel: +91 49545454
Fax: +91 11 26855450
Email: spsharma@phdcci.in
Website: www.phdcci.in

Follow us on



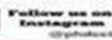
"Towards a Prosperous India"



PHD CHAMBER OF COMMERCE AND INDUSTRY

PHD House, 4/2 Siri Institutional Area, August Kranti Marg, New Delhi - 110 016 (India) • Tel. : +91-11-2686 3801-04, 49545454, 49545400
Fax : +91-11-2685 5450 • E-mail : phdcci@phdcci.in • Website : www.phdcci.in, CIN: U74899DL1951GAP001947

Connect with us:



COPYRIGHT: All rights reserved. No part of this publication/Release may be reproduced, distributed, or transmitted in any form or by any means, without the prior written permission of the publisher. For permission requests, write to the publisher.

DISCLAIMER: This message and its attachments contain confidential information. If you are not the intended recipient, you are strictly prohibited to disclose, copy, distribute or take any action in reliance on the contents of this information. E-mail transmission cannot be guaranteed to be secure or error-free, as information could be intercepted, corrupted, lost, destroyed, arrive late or incomplete, or contain viruses. The sender therefore does not accept liability for any errors or omissions in the contents of this message, which arise as a result of e-mail transmission. If verification is required please request a hard-copy version.